

LC 300 HPLC/UHPLC CONSUMABLES AND SUPPLIES



Table of Contents

INTRODUCTION.....	2
LC 300 INSTRUMENT SPARES.....	2-3
AUTOSAMPLER ACCESSORIES.....	4
VIALS AND CAPS.....	5-6
EPIC HPLC AND UHPLC COLUMNS.....	7
EPIC C18.....	8
CLONE LC COLUMNS.....	9-10
TUBING AND FITTINGS.....	10
SYRINGE FILTERS.....	11
STARTER KITS.....	12

Introduction

Whether you need high-performance liquid chromatography (HPLC) or ultra-high performance liquid chromatography (UHPLC), with our versatile LC 300 solutions you can count on the right technology for the work you do. The LC 300 systems provide robust, trouble-free operation and are perfect for routine analysis and more demanding applications, giving you the highest sensitivity and resolution, as well as faster results.

LC 300 INSTRUMENT SPARES

Detectors: Lamps, Flowcells, and Accessories

Our extensive quality control and inspection process demand the very best quality sources. Choosing a PerkinElmer deuterium, tungsten, or xenon source provides outstanding ultraviolet and true visible performance.

- Exceptional performance anywhere in the detector wavelength ranges (UV/Vis: 190 - 700 nm, photodiode array detector (PDA) and multi-wavelength UV/Vis detector (MWD): 190 - 790 nm, Fluorescence: 200 - 900 nm).
- Lamp changes are quick and easy due to a unique self-aligning clamp mount for the for the UV/Vis, MWD, and PDA detectors.

Lamps

UV/VIS Detector Lamps

Description	Part No.
Deuterium Lamp	N2920149
Tungsten Lamp	N2920146



Deuterium Lamp



Tungsten Lamp

MWD and PDA Detector Lamp

The LC 300 lamps provide true UV/Vis detection. The excellent signal-to-noise characteristics make it ideally suited for low-volume or low concentration samples. Additionally, the LC 300 PDA detector provides high-resolution spectral data.

Description	Part No.
Deuterium Lamp	09290900

Fluorescence Detector Lamps

The major benefit afforded by fluorescence detection is the inherent high sensitivity of the technique coupled with outstanding specificity. The LC 300 Fluorescence detector provides excellent signal-to-noise ratio for trace analysis using a 150 W xenon source.

Description	Part No.
Xenon Lamp	N2555048

Refractive Index Detector Light Source

The LC 300 Refractive Index detector, with its deflection-type design, allows sensitive detection of non-UV absorbing compounds with low noise and drift characteristics. The lamp is a long-lasting LED light source.

Description	Part No.
Light Source Assembly (including cable and connector)	N2556009

Flowcells

Detector FlowCells

The LC 300 flowcells provide the highest detection limits possible for your sample. The 6 mm pathlength flowcell for the UV/Vis detector has been optimized for lower-dispersion LC analysis and is the perfect choice when using narrow bore, 2.1 mm or microbore, 1 mm columns.

Description	Size	Part No.
Flowcell	6 mm x 2.4 µL	N2920127
Flowcell	Dry Cell	29000078

Multiwavelength (MWD) and Photodiode Array (PDA) Detectors Flowcells

Description	Size	Part No.
Flowcell (Standard)	10 mm x 1 µL	N2950450
Flowcell	50 mm x 5 µL	N2950455
Flowcell	Dry Cell	N2950429

Fluorescence Detector Flowcells

Description	Volume	Part No.
Flowcell Complete	12 µL	N2555049
Flowcell Complete	4 µL	N2555054

Detector Backpressure Regulator

The detector backpressure regulator is a device that is attached to the outlet of the detector to prevent outgassing in the flowcell, eliminating variations to the detector baseline.

Description	Volume	Part No.
Backpressure Regulator	40 psi in-line	N2925090
Backpressure Regulator Adjustable -Stainless Steel	15-59 psi	09907126

Pump Accessories

All pump accessories listed are applicable for the 10K (HPLC) and the 18K (UHPLC) binary and quaternary pumps.

Pump Preventive Maintenance (PM) and Lubrication Kits

Description	Part No.
(U)HPLC Gradient Pump Basic PM Kit (6 months)	N2991115
(U)HPLC Gradient Pump Premium PM Kit (12 months)	N2991114
(U)HPLC Gradient Pump Lubrication Kit	N2991136

Pump Seals, Pistons and Check Valves

Description	Part No.
Check Valve Cartridge (Single)	N2991112
Check Valve Housing, Inlet Assembly	N2991120
Check Valve Housing, Outlet Assembly	N2991121
High-Pressure Seal	N2991111
Outlet Filter, 2-µm	N2991113
Seal Replacement Tool	N2991100
Piston Cartridge Replacement Kit (Piston and Seal for the Seal Wash)	N2991107
10-µm Solvent Line Filters (Sinkers)	09903610

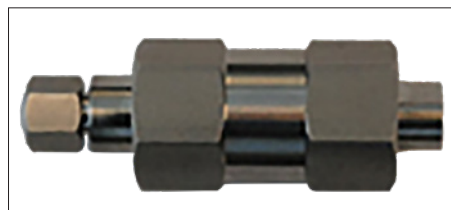
Pump Replacement Tubing

Description	Part No.
Tubing, Stainless Steel, 1/16-in., Pump to Pump	N2991101
Tubing, Stainless Steel, 1/16-in., Pump B to Valve	N2991106
Tubing, Stainless Steel, 1/16-in., Valve to Purge Pump A	N2991102
Tubing, Stainless Steel, 1/16-in., Valve to Purge Pump B	N2991104
Tubing, Stainless Steel, 1/16-in., Valve to Mixer	N2991103

Pump Backpressure Regulator

Description	Part No.
Pump Backpressure Regulator (Adjustable up to 5,000 psi)	N2925091
1000 psi Pressure Assembly	N2910381

High Pressure Analytical Mixers



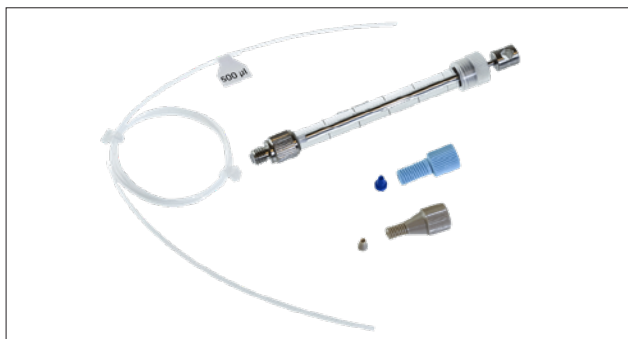
Combo Mixer

Mixers are important in facilitating complete mobile phase blending, resulting in improved retention performance. These mixers should be used as part of LC 300 systems, where high pressure blending is required. Mixers incorporate a highly efficient cross-flow shearing mechanism that produces vortex shear mixing over a wide range of volumes. They are now offered in 18,000 psi pressure max flavor. The Combo mixer used in the LC 300 pump is a mixer and in-line filter combined. A 35 µL mixer ships with the 18K (UHPLC) binary pump and a 100 µL mixer ships with the 10K (HPLC) binary pump.

Description	Vol.	Part No.
Combo. Mixer Assembly with 2-µm Inline Filter	35 µL	N2991143
Combo. Mixer Assembly with 2-µm Inline Filter	100 µL	N2551005
Plastic Priming Syringe	30 mL	09904849
Replacement 2 µm Filter for Mixer (1 ea.)	1 Each	N2991113

AUTOSAMPLER ACCESSORIES

General Accessories: Loops, Valve Parts, Trays, Syringes



250 µL Syringe Kit with 500 µL Buffer Tubing (N2936052)

Loops

Stainless Steel Sample Loops



Stainless Steel loops required for use with LC 300 systems (up to 18,000 psi)

Description	Size	Part No.
Sample Loop, Stainless Steel	2 µL	N2936071
Sample Loop, Stainless Steel	5 µL	N2936056
Sample Loop, Stainless Steel	10 µL	N2936057
Sample Loop, Stainless Steel	20 µL	N2936058
Sample Loop, Stainless Steel	50 µL	N2936059
Sample Loop, Stainless Steel	100 µL	N2936060
Sample Loop, Stainless Steel	200 µL	N2936061
Sample Loop, Stainless Steel	500 µL	N2936062
Sample Loop, Stainless Steel	1 mL	N2936063
Sample Loop, Stainless Steel	2 mL	N2936064
Sample Loop, Stainless Steel	5 mL	N2936065

Valve Parts

Valve Maintenance Parts

Description	Part No.
Valve Rotor Seal for UHPLC Injection Valve	N2552009
Valve Rotor Seal for the HPLC Injection Valve	N2552010
Stator for 18K	N2932002

Trays

Trays and Accessories

Description	Part No.
25-Position 6 mL Vial Sample Tray	N2936045
80-Position 2 mL Vial plus (5) 6 mL Vial Tray (for Derivatization)	N2936046
80-Position 2 mL Vial Tray with Dilution Tray	N2936076
96-Well Microtiter Adapter	N9302562
96-Well 'Deep-well' Microtiter Adapter	N9302560
96-Well 7 mm Pre-slit Silicone Plate Mat/Seal	N9302555
96-Well 'Deep' Microtiter Plate Adaptor (Supports Dual Microtiter Plates)	N2936048
96-Well 'Shallow' Microtiter Plate Adaptor (Supports Dual Microtiter Plates)	N2936049
384-Well Microtiter Adapter	N2936050
100-Position 2 mL Vial Sample Tray	N2936042
(200) 0.2 mL Microvial plus (5) 2 mL Vial Tray	N2936043

Syringes

Sampling Syringes

Description	Size	Part No.
Sampling Syringe	50 µL	09923304
Sampling Syringe	100 µL	09923305
Sampling Syringe	250 µL	09923270
Sampling Syringe	500 µL	09923306
Sampling Syringe	1000 µL	09923307
Syringe Tip Replacements (pkg. 10)	250 µL	N2936003

Needles and Syringes Kits

Description	Part No.
Syringe Kit, 100-µL w/ 200 µL Buffer Tubing	N2936051
Syringe Kit, 250-µL w/ 500 µL Buffer Tubing	N2936052
Syringe Kit, 500-µL w/ 1000 µL Buffer Tubing	N2936053
Syringe Kit, 1000-µL w/ 2000 µL Buffer Tubing	N2936054
Syringe Kit, 2500-µL w/ 5000 µL Buffer Tubing	N2936055
Sample Needle with Fittings	N2936009
Air Guide Needle, 62 mm	N2936000
Air Guide Needle, 80 mm	N2936342
Bio Compatible Sample Needle w/ Connectors	N2936010
Blunt Tip Needle	N2931199
Service Aid Tool Spacer	N2936346

Vial, Cap, and Septa Convenience Kits

Available with either glass or polypropylene vials, these autosampler vial, cap, and septa kits make it surprisingly simple to re-stock your laboratory. Our range of PureView Certified Vials are manufactured from Type 1 borosilicate glass which meets all USP, JP, and EP requirements. Produced to our exacting tolerances to facilitate uninterrupted analysis and minimize unplanned downtime, no product is placed into inventory without passing cleanliness and performance testing for consistent results.



The PureView MS certified vials and range of caps, including the ultra-low bleed septa, have additionally been thoroughly tested for residuals and approved on MS systems. So, you can have complete confidence in your results and minimize unplanned laboratory downtime.

Standard 2 mL Convenience Kits

ID Size (mm)	Septa Type	Screw Top Cap Type	Vial Type	Part No. Pkg. 100
9	PTFE/Red Rubber	Blue Cap	Clear Glass	N9300699
9	PTFE/Silicone	Blue Cap	Amber Glass	N9300719
9	PTFE/Silicone	Blue Cap	Clear Glass	N9300700
9	PTFE/Silicone (Pre-Slit)	Blue Cap	Amber Polypropylene	N9301735
9	PTFE/Silicone (Pre-Slit)	Blue Cap	Clear Polypropylene	N9301736
9	PTFE/Silicone (Pre-Slit)	Blue Cap	Clear Glass	N9300701

PureView Certified Convenience Kits

Vial Type (Neck Size)	Vial Type	Screw Top Cap Type	Part No. Pkg. 100
Screw (9 mm)	Clear Glass (Write on Spot)	Blue Screw Cap Red PTFE/White Silicone Septa (Pre-Slit)	N9310075
Screw (9 mm)	Amber Glass (Write on Spot)	Blue Screw Cap Red PTFE/White Silicone Septa (Pre-Slit)	N9310076

PureView MS Certified Convenience Kits

Vial Type (Neck Size)	Vial Type	Caps	Part No. Pkg. 100
Screw (9 mm)	Clear Glass (No Write on Spot)	Blue Screw Cap w/Red PTFE/White Silicone Septa (Pre-Slit)	N9310052
Screw (9 mm)	Clear Glass (Write on Spot)	Blue Screw Cap w/Red PTFE/White Silicone Septa	N9310053
Screw (9 mm)	Clear Glass (Write on Spot)	Blue Screw Cap w/PTFE/ White Silicone ULB Septa*	N9310064
Screw (9 mm)	Clear Glass (Write on Spot)	Blue Screw Cap w/Bonded Red PTFE/White Silicone (Pre-Slit)	N9310066
Screw (9 mm)	Clear Glass (Write on Spot)	Blue Screw Cap w/Bonded Red PTFE/White Silicone	N9310067
Screw (9 mm)	Amber Glass (Write on Spot)	Blue Screw Cap w/Red PTFE/White Silicone Septa (Pre-Slit)	N9310054
Screw (9 mm)	Amber Glass (Write on Spot)	Blue Screw Cap w/Red PTFE/White Silicone Septa	N9310055

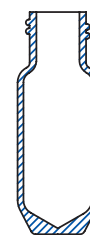
* ULB= Ultra Low Bleed

VIALS

1.5 mL Autosampler High Recovery Vials

Manufactured from the same high-quality Type 1 Class A borosilicate glass as our standard 2 mL vials, these high recovery vials provide efficient handling of a range of sample volumes from 30 μ L to 1.5 mL, with the convenience of a single vial format

Neck ID Size (mm)	Vial Top Type	Vial Description	Pkg.	Part No.
9	Screw	Clear Glass	100	N2926202

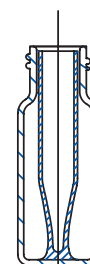


Screw Top

Microvolume Autosampler Vials

For easy liquid sampling, try our glass vials with fused sample inserts; a variety of volumes are available in either clear or amber glass. They are ideal when handling micro volume samples

Neck ID Size (mm)	Capacity	Vial Top Type	Vial Description	Pkg.	Part No.
9	300 μ L	Screw	Clear glass	100	N9300715
9	300 μ L	Screw	Amber glass	100	N9300716



Screw Top

CAPS AND SEPTA

PerkinElmer offers a variety of caps and septa to fulfil your application needs. Our range of ultra-low bleed septa offers the ultimate in purity and inertness.

Neck ID	Septa Type	Cap Type	Closure Type	Pkg.	Part No.
9	PTFE/silicone ultra-low bleed	Blue (polypropylene)	Screw	100	N9306362
9	PTFE/silicone ultra-low bleed (pre-slit)	Blue (polypropylene)	Screw	100	N9306364
9	PTFE/Silicone	Blue (polypropylene)	Screw	100	N9306202
9	PTFE/silicone (pre-slit)	Blue (polypropylene)	Screw	100	N9306203

EPIC HPLC AND UHPLC COLUMNS

The Epic® line is our latest range of LC columns, based on high density monomerically bonded phases produced through a proprietary bonding process. Epic HPLC and UHPLC columns are compatible with a wide range of organic modifiers and buffers and stable over a wide pH range. All Epic products use an ultra-high purity metal free silica and undergo strict quality control testing. For flexibility, we offer a wide range of column sizes as well being fully scalable from analytical to preparative dimensions.

An extensive range of column chemistries are available, providing a broad range of selectivities to enhance method development. The Epic line offers reversed-phase C18 columns and shorter alkyl chain chemistries for general purpose separations. The groundbreaking AQ phase from ES Industries (AquaSep), offers improved polar compound retention under RP conditions. This phase has been further refined in the Epic Polar column. Extensive selectivity options are also available (e.g. phenyl-hexyl, naphthyl, biphenyl, fluorooctyl (FO), HILIC, and cyano) to provide analysts with a method development tool kit ready to tackle any separation. As the first to commercialize fluorinated stationary phases, the continued development yielded Epic PFP LB (low bleed) and FO LB; truly unique low bleed stationary phases capable of performing many challenging separations.

Many of the commercially available HILIC stationary phases are converted normal phase columns which yield poor methods, poor separations and lack durability. Our line of HILIC columns, including the new Epic HILIC POH, are specifically designed for HILIC chromatography to achieve high performance separations, yield rugged methods and deliver long column lifetimes.



Whatever your separation need, we have a chemistry or dimension to fill it.

Features and Benefits

- Ultra-high purity silica for improved peak shape, especially for basic compounds
- Extensive range of stationary phase chemistries with innovative bonding chemistry to enhance method development
- High density bonding produces columns with better pH stability, increased sample loading and better lot-to-lot reproducibility
- Extended pH stability across commonly used mobile phase buffers
- Microbore to preparative dimensions available to allow flexibility and full scalability

Material Characteristics

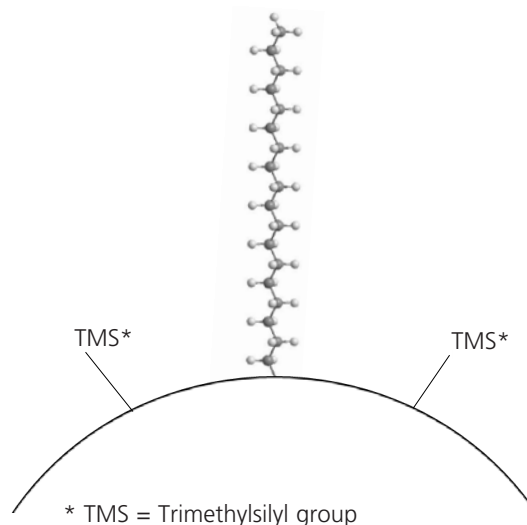
Brand	Phase*	Particle Size (µm)	Pore Size (Å)	Carbon %	End Cap	pH Range	USP Code
Epic	C18	1.8, 3, 5, 10	120	18	Yes	1-10	L1
Epic	C18 MS	1.8, 3, 5, 10	120	22	No	1-10	L1
Epic	C18 SD	1.8, 3, 5, 10	120	25	Yes	1-10	L1
Epic	C18 Cannabinoid	3	120	18	No	1-10	L1
Epic	C8	1.8, 3, 5, 10	120	10	Yes	1-10	L7
Epic	Polar	1.8, 3, 5, 10	120	18	No	1-10	L1
Epic	Amine HD	1.8, 3, 5, 10	120	–	No	1-10	L8
Epic	Cyano	1.8, 3, 5, 10	120	–	No	1-10	L10
Epic	C4 SD	1.8, 3, 5, 10	120	12	Yes	1-10	L26
Epic	Silica	1.8, 3, 5, 10	120	–	No	1-8	L3
Epic	HILIC Silica	1.8, 3, 5, 10	120	–	No	1-8	L3
Epic	HILIC POH	1.8, 3, 5, 10	120	–	No	1-10	–
Epic	Diol	1.8, 3, 5, 10	120	–	No	1-10	L20
Epic	HILIC FL	1.8, 3, 5, 10	120	–	No	1-10	–
Epic	HILIC RP	1.8, 3, 5, 10	120	–	No	1-10	–
Epic	HILIC PI	1.8, 3, 5, 10	120	–	Yes	1-10	–
Epic	Naphthyl	1.8, 3, 5, 10	120	25	Yes	1-10	–
Epic	PFP LB	1.8, 3, 5, 10	120	–	Yes	1-10	L43
Epic	FO LB	1.8, 3, 5, 10	120	–	Yes	1-10	–
Epic	Phenyl	1.8, 3, 5, 10	120	16	Yes	1-10	L11
Epic	Diphenyl	1.8, 3, 5, 10	120	20	Yes	1-10	L11
Epic	Biphenyl	1.8, 3, 5, 10	120	25	Yes	1-10	L11
Epic	Phenyl-hexyl	1.8, 3, 5, 10	120	18	Yes	1-10	L11

*Preparative columns of these phases are also available. Please enquire for more details at LCA.TechSupport@perkinelmer.com

Note: LB = Low Bleed, MS = Mass Spec, SD = Super Dense, HD = High Density, POH = Polyhydroxylated, FL = Fluorinated, RP = Reversed Phase, PI = Polar Imbedded HILIC = Hydrophilic Interaction Liquid Chromatography

EPIC C18

Epic C18 is a highly inert reversed phase due to its superior base deactivation. As a result of the high-density bonding levels ($> 4 \mu\text{mol}/\text{m}^2$), the Epic C18 demonstrates superior peak shapes for the most demanding applications. This phase provides exceptional peak shape and selectivity over a wide range of compounds and pH and is the workhorse HPLC and UHPLC phase for RP small molecule analysis. It can be used with basic, neutral and acidic analytes.



Phase	Length (mm)	ID (mm)	Particle Size (μm)	Part No.
Epic C18	50	2.1	1.8	512A91-EC18
Epic C18	50	2.1	3	112191-EC18
Epic C18	50	3.0	1.8	513A91-EC18
Epic C18	50	4.6	3	115191-EC18
Epic C18	50	4.6	5	115291-EC18
Epic C18	75	4.6	3	195191-EC18
Epic C18	100	2.1	1.8	522A91-EC18
Epic C18	100	2.1	3	122191-EC18
Epic C18	100	3.0	1.8	523A91-EC18
Epic C18	100	3.0	3	123191-EC18
Epic C18	100	4.6	3	125191-EC18
Epic C18	100	4.6	5	125291-EC18
Epic C18	125	4.6	5	105291-EC18
Epic C18	150	2.1	1.8	532A91-EC18
Epic C18	150	2.1	3	132191-EC18
Epic C18	150	3.0	3	133191-EC18
Epic C18	150	4.0	3	134191-EC18
Epic C18	150	4.0	5	134291-EC18
Epic C18	150	4.6	3	135191-EC18
Epic C18	150	4.6	5	135291-EC18

Other column dimensions and guard cartridges are available. Please enquire for more details at LCA.TechSupport@perkinelmer.com

Phase	Length (mm)	ID (mm)	Particle Size (μm)	Part No.
Epic C18	200	4.6	5	145291-EC18
Epic C18	250	4.0	10	154391-EC18
Epic C18	250	4.0	5	154291-EC18
Epic C18	250	4.6	10	155391-EC18
Epic C18	250	4.6	3	155191-EC18
Epic C18	250	4.6	5	155291-EC18
Epic C18	300	4.0	10	164391-EC18
Epic C18	300	4.0	5	164291-EC18
Epic C18	300	4.6	3	165191-EC18
Epic C18	300	4.6	5	165291-EC18
Epic C18 Prep	50	30	10	11N391-EC18
Epic C18 Prep	50	50	5	11F291-EC18
Epic C18 Prep	100	20	5	128291-EC18
Epic C18 Prep	150	20	5	137291-EC18
Epic C18 Prep	250	10	5	157291-EC18
Epic C18 Prep	250	20	5	158291-EC18
Epic C18 Prep	250	30	10	15N391-EC18
Epic C18 Prep	250	30	5	15N291-EC18
Epic C18 Analytical Guard Cartridges (Pkg. 5)	10	3	5	500101-EC18
Analytical Guard Cartridge Holder with integrated coupler	—	—	—	ES500100

CLONE LC COLUMNS

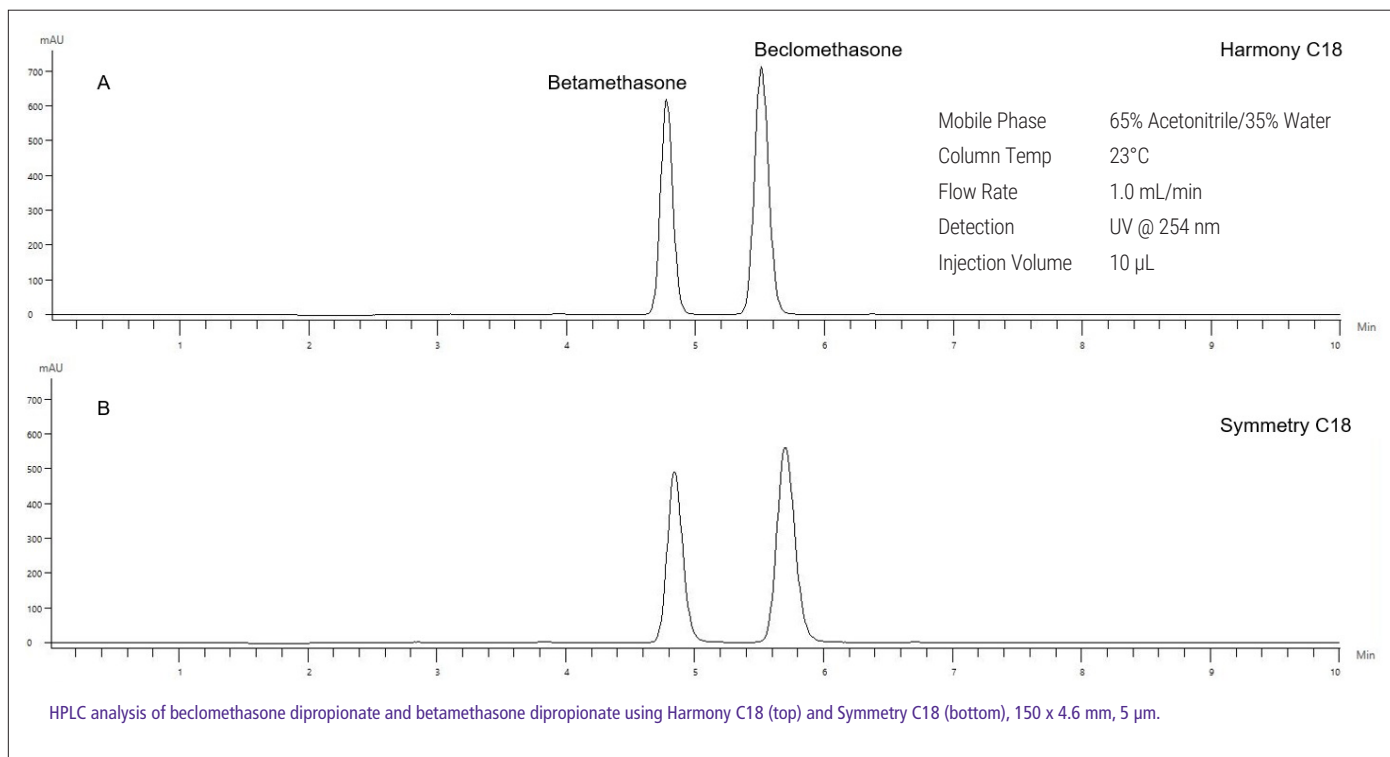
Legacy methods, by their very nature, often use older column technologies. These older phases can be accompanied by larger variations in batch to batch performance which can lead to inconsistent results and out of specification (OOS) occurrences. With routine analysis, often completed with compliant procedures, any unplanned down time to investigate OOS instances can impact productivity. Our range of clone phases offer a cost-effective comparable alternative to many of the older leading brands, whilst ensuring consistency and stability in analysis.

Our product line is fully scalable from analytical to preparative columns, please enquire for more information.



Features and Benefits

- Cost effective and comparable alternative to older leading brands to support legacy methods
- Better lot-to-lot reproducibility due to more stable production methods, especially when compared to very old brands



Clone Column Material Characteristics

PerkinElmer Brand	Phase**	Third Party Equivalent	Particle Size (µm)	USP Code
Aviator™	C18	Avantor ACE®	3, 5	L1
Chromega Z™	C18	Agilent Zorbax® RX	3, 5	L1
Chromegabond® HC	C18	Nouryon Kromasil®	3, 5, 7, 10	L1
	C8		3, 5, 7, 10	L7
Chromegabond® Ultra	C18	Beckman Ultrasphere®	3, 5	L1
	C8		3, 5	L7
DeactiSil™	ODS2	GL Sciences Inertsil®	5, 10	L1
	ODS3		3, 5	L1
DuraSep™ IR	RP18	E. Merck LiChrosorb®	5, 7, 10	L1
DuraSep™ S	RP18	E. Merck LiChrospher®	3, 5, 10	L1
EnduroSphere™	C18	Macherey-Nagel Nucleosil®	3, 5, 7, 10	L1
Harmony™	C18	Waters Symmetry®	3.5, 5, 10	L1
HarmonySecure™	RP18	Waters SymmetryShield™	3.5, 5	L1
HyperSelect™ BDS	C18	Thermo Hypersil®	3, 5	L1
HyperSelect™	ODS C18	Thermo Hypersil®	3, 5, 10	L1
	ODS2 C18		3, 5	L1
HyperSelect Gold™	C18	Thermo Hypersil Gold™	3, 5	L1
Micropak™	C18	Waters µBondapak®	5, 10	L1
Neptune™	dC18	Waters Atlantis™	3, 5	L1
Partisep™	ODS3	Whatman Partisil™	5, 10	L1
Sonoma™	C18(2)	Phenomenex Luna®	3, 5, 10	L1
Spherisep™	ODS1	Waters Spherisorb®	3, 5, 10	L1
	ODS2		3, 5, 10	L1
StarRise™	ODS1 ODS2	Waters SunFire™	3.5, 5, 10	L1

* Other brand alternatives are also available including HyperSelect HiPurity (Hypersil HiPurity alternative), etc.
Please enquire for more details at LCA.TechSupport@perkinelmer.com

** Preparative columns of these phases are also available. Please enquire for more details at LCA.TechSupport@perkinelmer.com

TUBING AND FITTINGS

Description	Color	Size (cm)	Part No.
ID PEEK Tubing			
0.004 in.	Black	50	N2916200
0.005 in.	Red	50	N2916056
0.004 in.	Black	76	N2916260
0.005 in.	Red	66	N2916262
0.004 in.	Black	152 (5 ft.)	N2916261
0.005 in.	Red	152 (5 ft.)	N2916263
0.007 in.	Yellow	152 (5 ft.)	N9302678

Description	Color	Size (cm)	Part No.
ID Stainless Steel Tubing			
1/16 in. OD x 0.007 in. ID	-	20	02711441
1/16 in. OD x 0.007 in. ID	-	50	00891480

Fittings	Part No.
Nut/Ferrule-Ti Hybrid (Hand-Tight Fitting to 13K psi, Wrench-tight to 20K psi)	N9306301
Ferrule-Titanium Hybrid (pkg. of 10)	N9306300
Stainless Steel Valco Ferrules, 1/16" (pkg. of 10)	N2992100
Stainless Steel Valco Nuts, 1/16" (pkg. of 10)	N2992101
ZDV Stainless Steel Union (with Two Nuts and Two Ferrules)	09903289
PEEK Union (pkg. of 5)	ED020008
Finger-tight Fittings (pkg. of 10)	ED020005
PEEK Tubing Cutter (Includes 5 Extra Blades)	N9307820
Valco Ferrule, 1/16", PEEK (pkg. of 1)	N2992537
Valco Nut, 1/16", PEEK (pkg. of 1)	N2992536
Valco Ferrule, 1/16", PEEK (pkg. of 10)	09220533
Valco Nut, 1/16", PEEK (pkg. of 10)	09220534

VIEW OUR FULL CATALOG | <https://www.perkinelmer.com/LCColumnCatalog>

SYRINGE FILTERS

Nylon and PTFE Syringe Filters

Our syringe filters are lab tested and certified to bring you the highest quality products available. Our membrane materials are supplied per ISO9001:2008 certified manufacturing practices, in certified clean room conditions, using the latest manufacturing technology to ensure you receive a high quality, consistent product every time. Select our superior premium 17- and 30-mm filters that are suitable for coarse/crude samples or higher detection limit applications (such as food, beverage, or environmental analysis), and our 4-, 13- and 25-mm syringe filters are ideal for routine QA/QC analysis.



Nylon Syringe Filters



Yellow Nylon Syringe Filters, 17 mm, 0.45 μ m, Pkg. 100 - 02542880

Ideal for aqueous (non-acidic) or organic sample preparation and HPLC, GC, or dissolution sample analysis. With its excellent flow characteristics, very low extractable levels and mechanical stability, nylon offers the best combination of physical parameters to meet the most stringent analytical needs.

Size	Pkg.	Color	0.22 μ m Particle Part No.	0.45 μ m Particle Part No.
4	200	Clear	02542900	02542901
13	100	Purple	02542902	02542903
17	100	Yellow	02542881	02542880
25	100	Purple	02542904	02542905
30	200	Yellow	02542883	02542882

PTFE (Hydrophilic) Syringe Filters



Clear PTFE (Hydrophilic) Syringe Filters, 0.45 μ m, 4 mm (200/pack) - 02542923

These filters are suitable for use with aqueous and aggressive organic solvent-based solutions and are suitable for HPLC sample preparation. They have broad chemical compatibility and high pH resistance.

Size (mm)	Pkg.	Color	0.22 μ m Particle Part No.	0.45 μ m Particle Part No.
4	200	Clear	02542922	02542923
13	100	Red	02542924	02542925
25	100	Red	02542926	02542927
30	100	Red	02542928	02542929

PVDF (Hydrophobic Polyvinylidene Fluoride) Syringe Filters

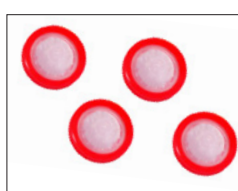


Maroon PVDF Syringe Filters, 0.45 μ m, 17 mm (100/pack) - 02542917

Compatible with a wide range of mild organic solutions. PVDF membranes are not recommended for use with acetone, DMF, DMSO, or bases >6N.

Size	Pkg.	Color	0.22 μ m Particle Part No.	0.45 μ m Particle Part No.
4	200	Clear	02542913	02542914
13	100	Yellow	02542915	02542783
17	100	Maroon	02542916	02542917
25	100	Yellow	02542918	02542919
30	100	Maroon	02542920	02542921

PTFE (Hydrophobic) Syringe Filters



Red PTFE (Hydrophobic) Syringe Filters, 0.22 μ m, 13 mm (100/pack) - 02542908

Versatile filters for use with aqueous and aggressive organic solvent-based solutions and are suitable for HPLC sample preparation. They have broad chemical compatibility and high pH resistance.

Size	Pkg.	Color	0.22 μ m Particle Part No.	0.45 μ m Particle Part No.
4	200	Clear	02542906	02542907
13	100	Red	02542908	02542909
17	100	Red	02542884	02542910
25	100	Red	02542911	02542912
30	100	Red	02542886	02542885

STARTER KITS

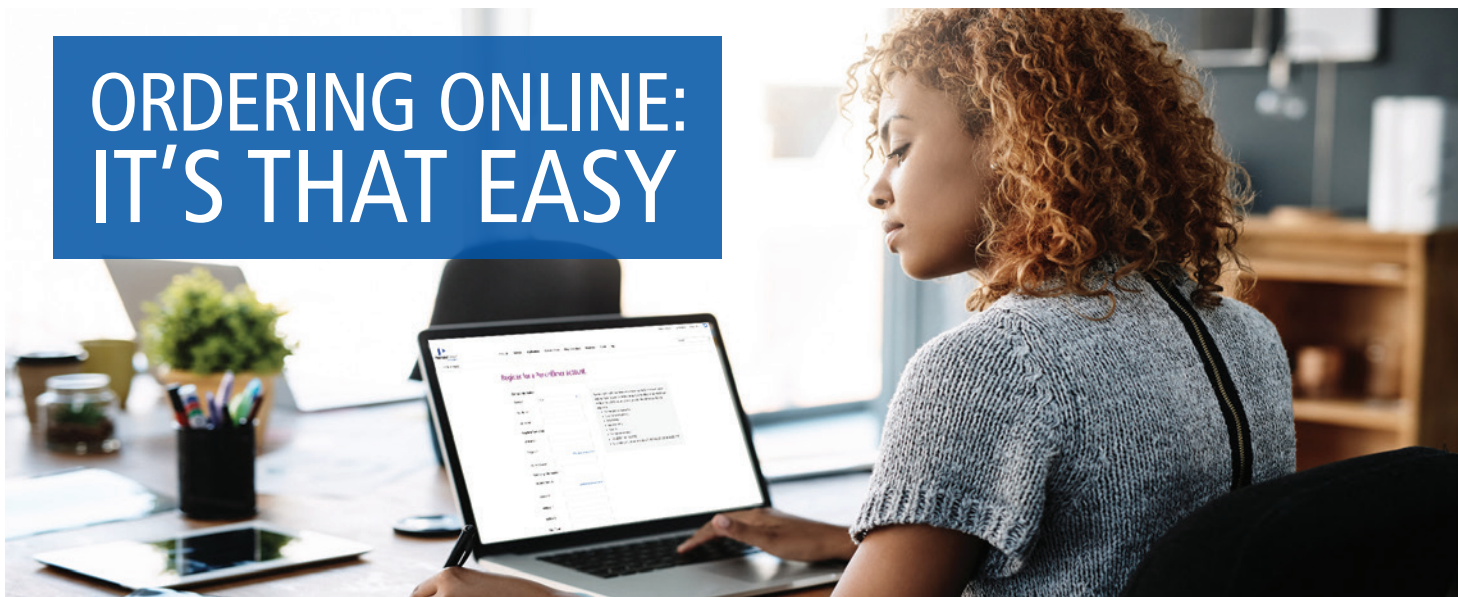
UHPLC – General Starter Kit

Description	Part No.	
UHPLC – General Starter Kit	N2930801	
Contents	Qty./Pkg.	Part No.
Open-End Wrench	2	09907233
Adjustable Wrench (Double Ended, 1/4 x 5/16)	1	N9301326
Reversible (Slotted/Phillips) Screw Driver, 5.5" L x 0.4" W	1	N9301480
ZDV Parker-Hannifin Stainless Steel Union	1	09903289
Medium-Stem Parker-Hannifin Stainless Steel Nuts	10	09903980
1/16 in. Parker-Hannifin Stainless Steel Ferrules	10	00873032
1/16 in. Valco Stainless Steel Ferrules	6	09903891
Finger-Tight Fittings, PEEK, 5.5K psi Max (pkg. 5)	1	N9307822
Nut/Ferrule-Ti Hybrid (Hand-Tight Fitting to 13K psi, Wrench-tight to 20K psi)	1	N9306301
1/16 in. Tefzel Nuts	2	09920381
1/16 in. Tefzel Reverse Ferrules	2	09920382
1/8 in. Tefzel Nuts	4	N2601189
1/8 in. Tefzel Reverse Ferrules	4	09903771
PEEK Tubing Cutter (Includes five Extra Blades)	1	N9307820
50 cm x 0.005 in. ID 1/16 in. Stainless Steel Tubing	3	02507060
5 ft. x 0.004 in. ID 1/16 in. PEEK Tubing, Black	1	N2916261
5 ft. x 0.005 in. ID 1/16 in. PEEK Tubing, Red	1	N2916263
30 mL Priming Syringe	1	09904849
2 mL Clear Write-On Vials w/ 9 mm Pre-Slit PTFE/Silicone Caps (pkg. 100)	1	N9300701
Cable/Tubing Organizer Clip	3	NX598006

HPLC – General Starter Kit

Description	Part No.	
HPLC – General Starter Kit	N2930802	
Contents	Qty./Pkg.	Part No.
Open-End Wrench	2	09907233
Adjustable Wrench (Double Ended, 1/4 x 5/16)	1	N9301326
Reversible (Slotted/Phillips) Screw Driver, 5.5" L x 0.4" W	1	N9301480
ZDV Parker-Hannifin Stainless Steel Union	1	09903289
Medium-Stem Parker-Hannifin Stainless Steel Nuts	10	09903980
1/16 in. Parker-Hannifin Stainless Steel Ferrules	10	00873032
1/16 in. Valco Stainless Steel Ferrules	6	09903891
Rheodyne Stainless Steel Nut, Short Stem	2	09904956
Rheodyne Stainless Steel Nut, Long Stem	2	09904974
1/16 in. Rheodyne Stainless Steel Ferrule	4	09904947
1/16 in. Tefzel Nuts	2	09920381
1/16 in. Tefzel Reverse Ferrules	2	09920382
1/8 in. Tefzel Nuts	4	N2601189
1/8 in. Tefzel Reverse Ferrules	4	09903771
Finger-Tight Fittings, PEEK, 4K psi Max	6	09920513
PEEK Tubing Cutter (Includes 5 Extra Blades)	1	N9307820
50 cm x 0.005 in. ID 1/16 in. Stainless Steel Tubing	1	02507060
50 cm x 0.007 in. ID 1/16 in. Stainless Steel Tubing	2	00891480
5 ft. x 0.007 in. ID 1/16 in. PEEK Tubing, Yellowish-Tan	1	N9302650
5 ft. x 0.005 in. ID 1/16 in. PEEK Tubing, Red	1	N2916263
30 mL Priming Syringe	1	09904849
2 mL Clear Write-On Vials w/ 9 mm Pre-Slit PTFE/Silicone Caps (pkg. 100)	1	N9300701
Cable/Tubing Organizer Clip	3	NX598006

ORDERING ONLINE: IT'S THAT EASY



Sign Up and Get Started Today at www.perkinelmer.com/register

Quick and Efficient Three Steps - that's how easy it is to buy online

1. Visit www.perkinelmer.com
2. Click on "Login/Register" at the top of the web page to register.
All you need is your PerkinElmer account number.
3. Search for the product you need and add to your cart

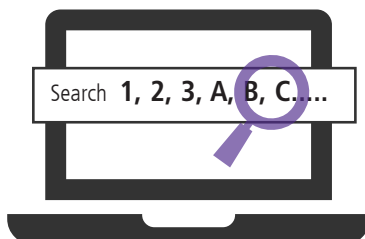
Benefits of ordering online:

- Real time product availability
- Immediate order processing
- Order confirmations
- Shipment notifications
- Quick re-order
- Save items to favorites list
- Tracking information and updates
- All orders available in "my account" order history

Step 1: Quick registration.

Step 2: Shop by product number, alphabetical listing, or by technology.

Step 3: Checkout via your shopping cart.



The power and convenience of real-time purchasing information are now available online.
When will the product ship? Shipment date of each item is visible in the shopping cart.

Shop Online Today!
<https://www.perkinelmer.com/buy>

PerkinElmer, Inc.
940 Winter Street
Waltham, MA 02451 USA
P: (800) 762-4000 or
(+1) 203-925-4602
www.perkinelmer.com



For a complete listing of our global offices, visit www.perkinelmer.com/ContactUs

Copyright ©2022, PerkinElmer, Inc. All rights reserved. PerkinElmer® is a registered trademark of PerkinElmer, Inc. All other trademarks are the property of their respective owners.